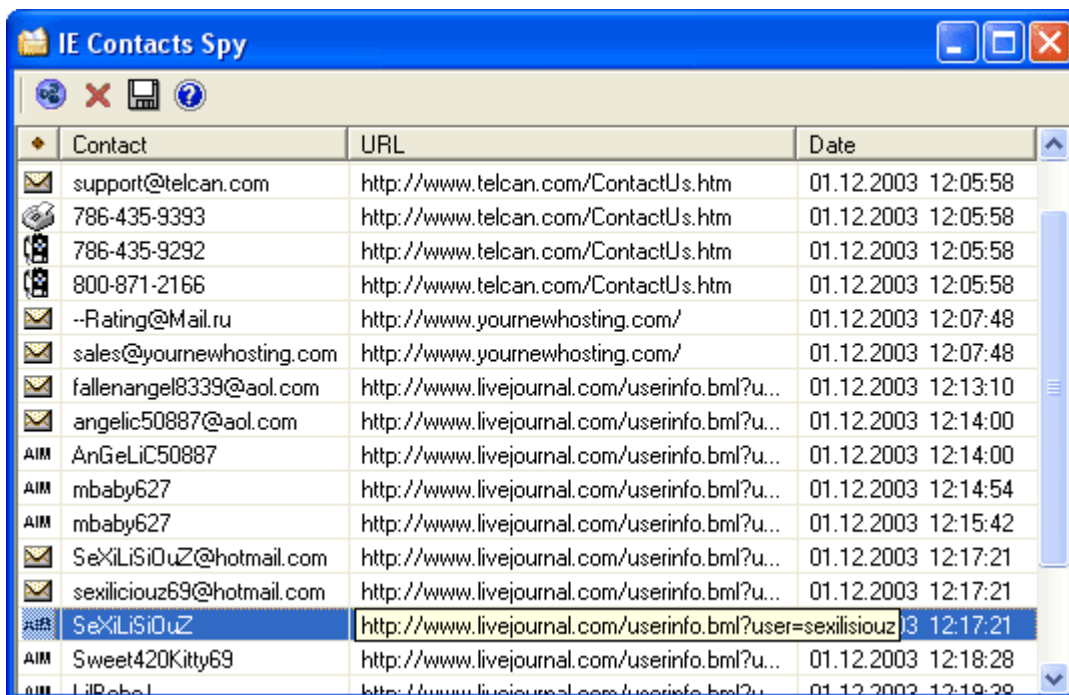


IE Contacts Spy - Introduction

IE Contacts Spy is a plug-in for Internet Explorer. It extracts contact information from every web page visited. Contact information includes e-mail addresses, telephone and fax numbers, ICQ, Yahoo Messenger, AOL Instant Messenger and MSN Messenger ID numbers.

After you install the plug-in, it builds itself into Internet Explorer and "looks through" every web page visited. If a page contains any contact information (as listed above), it will be extracted and saved in the program's database. All this happens without any active involvement of users.

After the program is installed, the Internet Explorer Tools menu will contain an additional item - IE Contacts Spy. This option allows you to see all recently found contacts. You are given a choice whether to see them all, or filter out only the relevant ones (like "fax numbers extracted within past 10 days from .org websites). The list can then be saved to a file or any MS Office application.

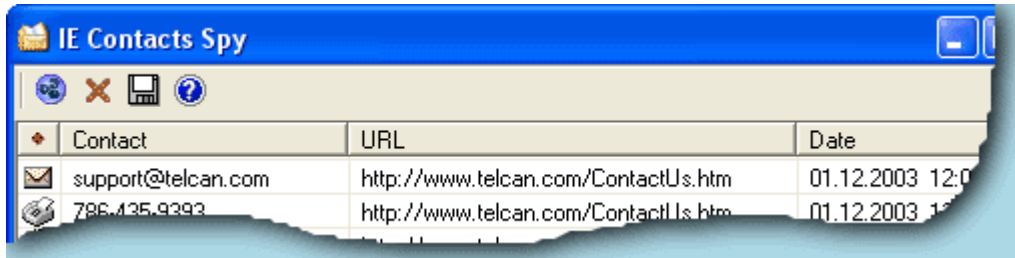


The screenshot shows the IE Contacts Spy application window. The window title is "IE Contacts Spy". The main area contains a table with three columns: "Contact", "URL", and "Date". The table lists various contact details extracted from web pages, including email addresses, phone numbers, and user IDs, along with the source URL and the date and time of extraction.

Contact	URL	Date
support@telcan.com	http://www.telcan.com/ContactUs.htm	01.12.2003 12:05:58
786-435-9393	http://www.telcan.com/ContactUs.htm	01.12.2003 12:05:58
786-435-9292	http://www.telcan.com/ContactUs.htm	01.12.2003 12:05:58
800-871-2166	http://www.telcan.com/ContactUs.htm	01.12.2003 12:05:58
-Rating@Mail.ru	http://www.yournewhosting.com/	01.12.2003 12:07:48
sales@yournewhosting.com	http://www.yournewhosting.com/	01.12.2003 12:07:48
fallenangel8339@aol.com	http://www.livejournal.com/userinfo.bml?u...	01.12.2003 12:13:10
angelic50887@aol.com	http://www.livejournal.com/userinfo.bml?u...	01.12.2003 12:14:00
AIM AnGeLiC50887	http://www.livejournal.com/userinfo.bml?u...	01.12.2003 12:14:00
AIM mbaby627	http://www.livejournal.com/userinfo.bml?u...	01.12.2003 12:14:54
AIM mbaby627	http://www.livejournal.com/userinfo.bml?u...	01.12.2003 12:15:42
SeXILiSiDuz@hotmail.com	http://www.livejournal.com/userinfo.bml?u...	01.12.2003 12:17:21
sexiliciouz69@hotmail.com	http://www.livejournal.com/userinfo.bml?u...	01.12.2003 12:17:21
SeXILiSiDuz	http://www.livejournal.com/userinfo.bml?user=sexilisiouz 3	01.12.2003 12:17:21
AIM Sweet420Kitty69	http://www.livejournal.com/userinfo.bml?u...	01.12.2003 12:18:28
AIM LiRebel	http://www.livejournal.com/userinfo.bml?u...	01.12.2003 12:19:39

View extracted contacts

IE Contacts Spy dialog window displays the tool panel and extracted contact information. The dialog window is launched by clicking *IE Contact Spy* button in the tool panel of Internet Explorer, through IE Tools menu or by right-clicking with a mouse and selecting *IE Contacts Spy* in the pop-up menu.



The table of contacts has four fields.

- **Type of contact** - 7 types available, each with own icon.
- **Contact** - the contact information itself, i.e. phone number or e-mail address.
- **URL** - address of the website where the contact information was extracted from.
- **Date** - date and time when the contact was extracted.

Clicking appropriate table header allows you to sort the contacts out in ascending or descending order.

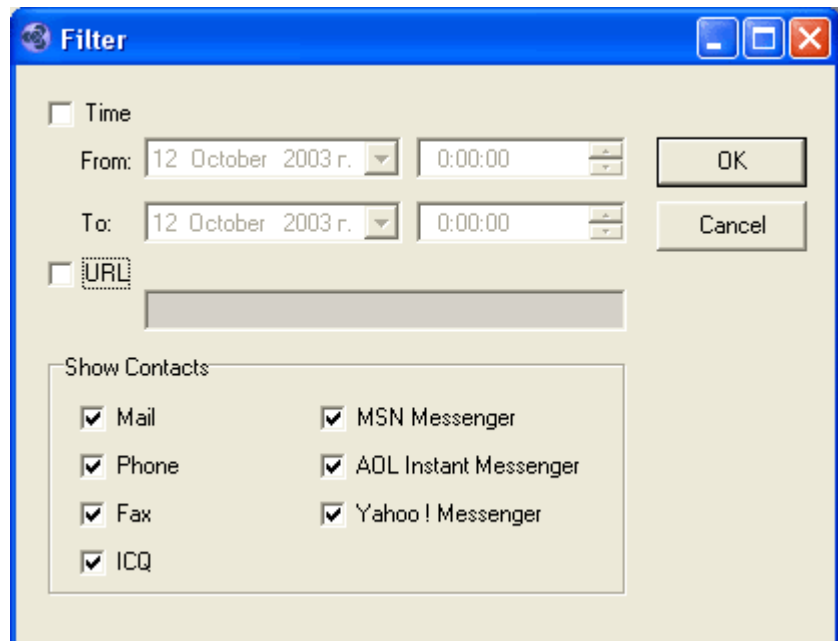
The tool panel consists of four buttons

- **Filter** - launches element filtration dialog window.
- **Remove** - removes all contacts
- **Save** - launches contact save dialog window
- **Help** - launches help.

Filtering and sorting contacts

This dialog window allows users to set contacts filtration criteria. The following filtration parameters are available:

- **Time range.** This filter allows you to limit the search results to a specified time period.
- **Web address.** This filter allows you to limit the search results to contacts extracted from the specified domain (like *http://www.yahoo.com* or



https://www.site.com/mydir/mydir2 or *http://www.mysite.* - the upper level domain may be .com, .net, .org or any other)

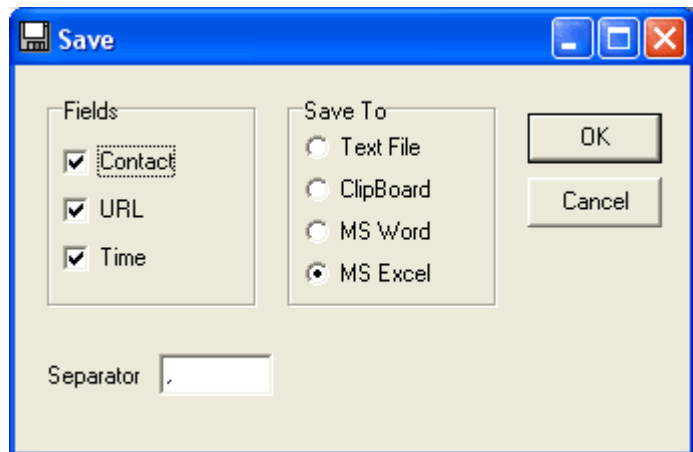
- **Contact type.** This filter allows you to limit the search results to certain type(s) of contacts by checking appropriate checkboxes.

Saving contacts

IE Contacts Spy provides users with options to save the results to a file, Windows clipboard, or any MS office application (Word/Excel). Press the Save button in the tool panel to start saving the results.

Select the parameters of saving data in the dialog window that appears:

- Save all table fields or only selected ones
- Where to save the data to - file, clipboard, MS Word, MS Excel
- Field delimiter.



If you select Word/Excel, the appropriate application will be loaded and the data will be exported there. Attention! When exporting large amounts of data (thousands of lines), this process may take some time. We strongly advise you [filter data out first](#), before exporting it.

Downloads

The latest version of **IE Contacts Spy** can be downloaded freely from our web site. The permanent location of the distribution package is: <http://www.massmailsoftware.com/d/iecspy.exe>.

Also you can visit our site www.massmailsoftware.com.

Contact us!

E-mail:

Feel free to contact us by e-mail at info@massmailsoftware.com. We are always happy to answer your questions so you can get the most out of our software.

Phone:

We do not offer phone support. We respond promptly to all emails received and feel this allows us to give you the best service and most complete answers to your questions.

Why should I register your software?

For many people, the biggest reason to register is to remove the program restrictions and get rid of the nag screen, which pops up at the most inconvenient times. For example, the unregistered version of **IE Contacts Spy** does not allow saving or exporting of found contacts.

Also, registration entitles you to receive technical support with higher priority and minor upgrades to the software for free. Registration may also entitle you to discounts on new software releases from [AtomPark Software](#). We will also send you updates and announcements by email to let you know about what's happening with our products.

Finally, by registering the software, you provide us with the resources and incentive to improve the software with updates, which you receive for free, and to develop additional quality products in the future.

Register IE Contacts Spy

The current version of **IE Contacts Spy** is distributed under a "free to try" license. That means you may download a trial version for evaluation. The trial version has some features locked. If you wish to purchase the program for unrestricted use, the cost is \$29.85 USD. You will be sent a code to register the software through email.

Online purchase

To buy IE Contacts Spy on-line please follow the link below:

▶ <http://www.massmailsoftware.com/buy/iecspy.htm>

Telephone and Fax Orders

If using telephone or fax orders, please include product ID: 7077-16 to ensure that you are paying for the right product.

Telephone:

US only (toll free): 877-353-7297

Outside the US: 425-392-2294

Fax:

US only (toll free): 888-353-7276

Outside the US: 425-392-0223

Check via Postal Mail

Please make sure you are making your check out to "Register Now!". You need to provide all of the information on the regular order form except credit card information. Please make sure you've included the product ID: 7077-16 to ensure that you are paying for the right product, and your postal and e-mail address for speedy service.

Please mail checks to:

Register Now!

ATTN: Orders

PO Box 1816

Issaquah, WA 98027

United States of America

Purchase Orders

If using purchase orders, make sure you've included the product ID: 7077-16 to ensure that you are paying for the right product.

A purchase order must be faxed or mailed with all necessary information including billing information. Most companies who choose to use the purchase order option have a standard form they use for making these types of orders.