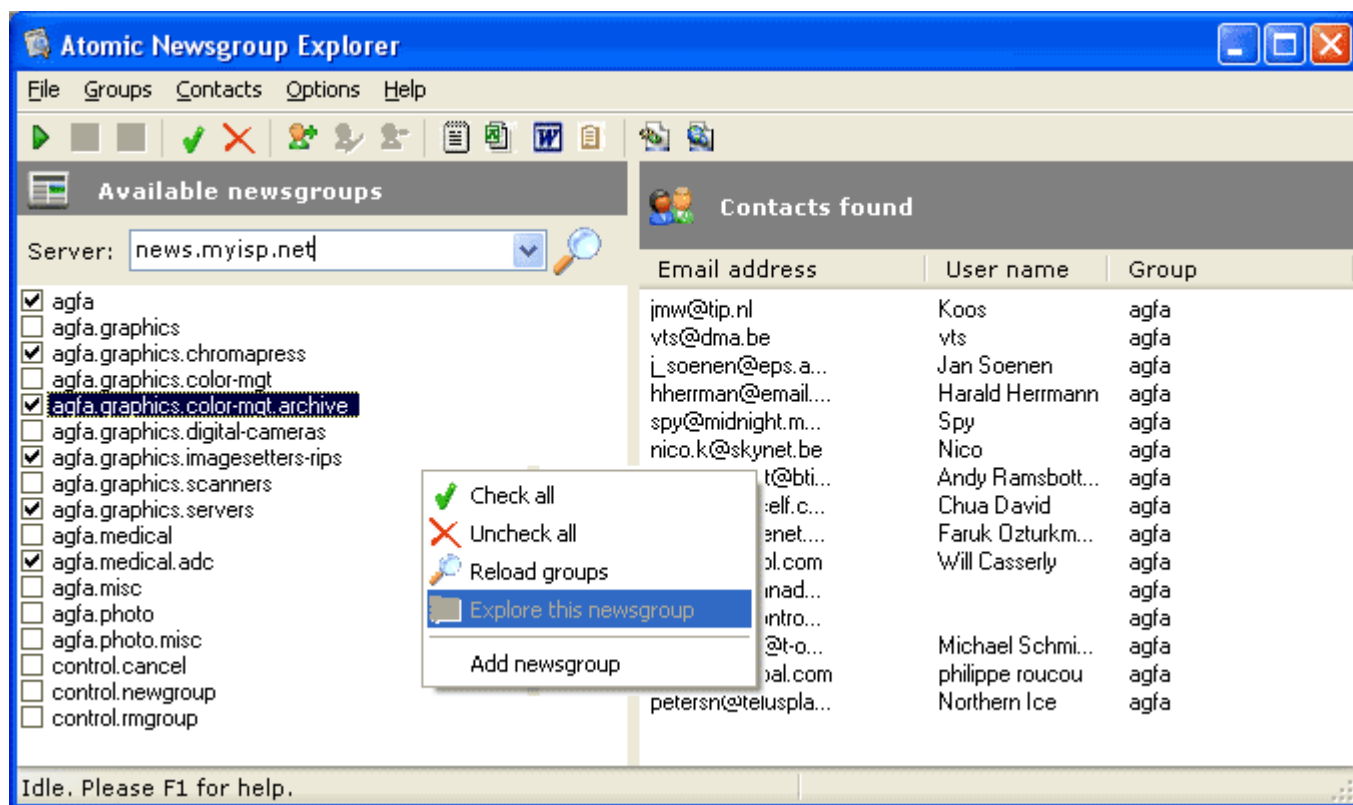


# Atomic Newsgroup Explorer

**Atomic Newsgroup Explorer (ANE)** is developed to extract e-mail addresses and user names from the newsgroups (usenets). Just enter a server address or choose it from the default list and the program will download the names of all available groups. Then select some interested groups to explore and ANE will gather all the addresses and names from these groups.

Actually, it takes a half an hour to get the new targeted list of e-mail addresses using ANE! The list can be saved to a file, Windows Clipboard or MS Word or MS Excel application.



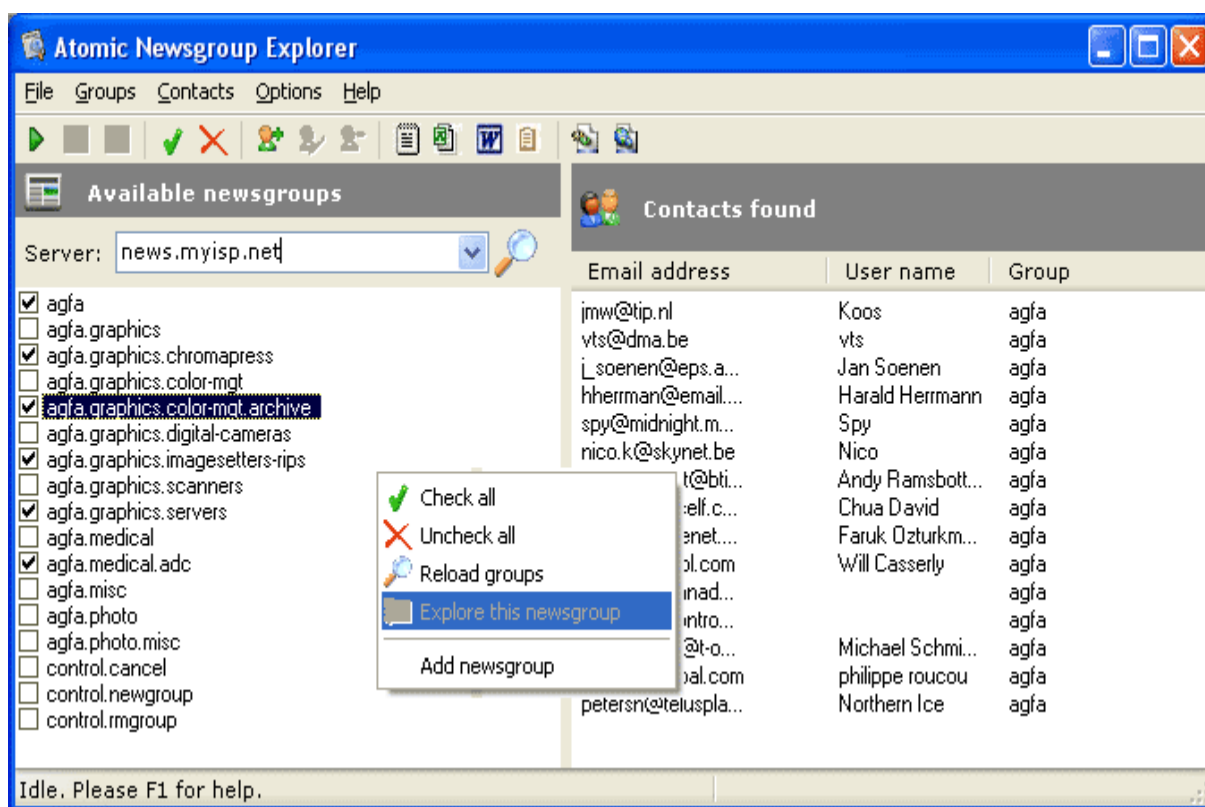
## The elements of program's main window:

1. Main menu - program's main menu
2. Hotkey panel - quick access to program's functions
3. News group loading panel - quick selection of news servers and public group loading panel.
4. Downloaded news group panel - this panel displays loaded news groups (their names). To select a group to load users' data, simply mark the check box next to the group. Additional features are available in the context menu.
5. Loaded user names and e-mails panel - this panel displays data loaded from the news groups (unique names and e-mail addresses of users). Additional features are available in the context menu.

# Using the program

**Atomic Newsgroup Explorer (ANE)** is developed to extract e-mail addresses and user names from the newsgroups (usenets). Just enter a server address or choose it from the default list and the program will download the names of all available groups. Then select some interested groups to explore and ANE will gather all the addresses and names from these groups.

Actually, it takes a half an hour to get the new targeted list of e-mail addresses using ANE! The list can be saved to a file, Windows Clipboard or MS Word or MS Excel application.



To get the list of news groups, select a news server through the main window menu item News server or through News group loading panel. The list of the news groups will be displayed in "Downloaded news group panel".

If necessary, it is possible to add any news group through a context menu (as in some cases, a news server may return only part of all available news groups, omitting private ones for security reasons) Addnewsgroup.

To extract e-mail addresses, mark the check boxes next to the groups of interest in "Downloaded news group panel".

If it is necessary to download information from a single group, select the menu item Explore this newsgroup through the context menu of "Downloaded news group panel".

Press Start in the main menu or use a hotkey in "Hotkey panel".

The information is extracted using multiple threads real-time. All results are saved in Loaded user names and e-mails panel. Only unique e-mail addresses are saved.

It is possible to temporarily interrupt the process by pressing Pause.

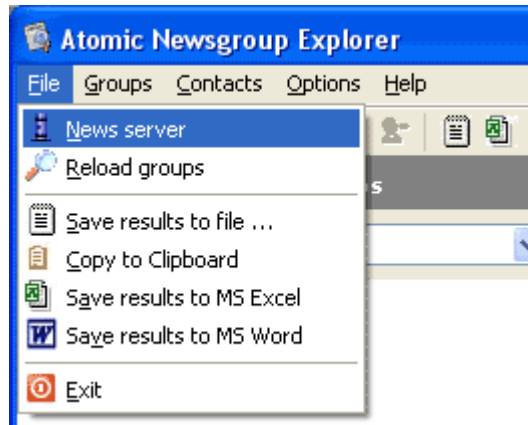
“Status panel” shows the number of currently processed news groups out of all selected (Groups loaded from selected), and the number of e-mails extracted (Emails).

When the loading process is finished, the extracted addresses may be edited. Actions available are as follows - Add address, delete selected addresses, Edit address

Export results (please, see the appropriate main menu items and corresponding context menu items).

# Main menu

## File



### ***News server***

Launches the news server address selection/input dialog (name or IP), where the data will be downloaded from.

There is an option that allows users to select server addresses from history. After the address(es) has been selected and the dialog has been closed, the program automatically reloads publicly available news groups.

### ***Reload groups***

Launches the process of reloading public news groups from the currently selected news server. Another way to launch the process is to press the tool button near NNTP server field.

### ***Save results to file***

Saves downloaded names and addresses to a text file, allowing users to select saving options and properties in the dialog window first.

The dialog permits users to select fields to export and save, by selecting the appropriate option; in addition, the fields may be separated. If the box Save to file is checked, the exported document will be saved to disk. Otherwise, the exported data will be displayed in a default word processor, without being saved anywhere.

### ***Save results to MS Excel***

Saves downloaded addresses and names to MS Excel document, allowing users to select saving options and properties in the dialog window first. This dialog window, however, lacks the Separate fields by option.

### ***Save results to MS Word***

Saves downloaded addresses and names to MS Word document, allowing users to select saving options and properties in the dialog window first. This dialog window, however, lacks the Separate fields by option.

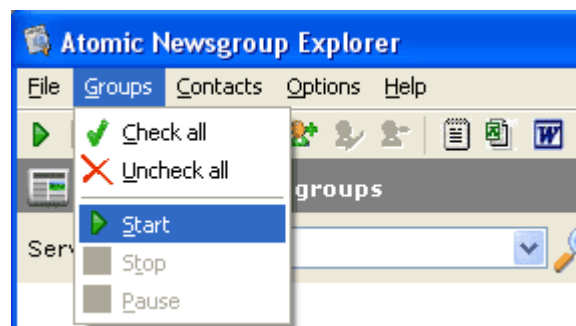
### ***Copy to clipboard***

Saves downloaded addresses and names to Clipboard, allowing users to select saving options and properties in the dialog window first. This dialog window, however, lacks the Save to file option.

### ***Exit***

Exits the program.

## **Groups**



### ***Check all***

Selects all news groups from the "Downloaded news group panel" list for downloading contact data (marks all check boxes)

### ***Uncheck all***

Cancels selection of all news groups from the "Downloaded news group panel" list for downloading contact data (removes all check marks)

### ***Start***

Launches the process of loading user addresses to the main window field "Loaded user names and e-mails panel". Available only when the loading process has not started yet. The feature requires using the selected news server and news group(s).

### ***Stop***

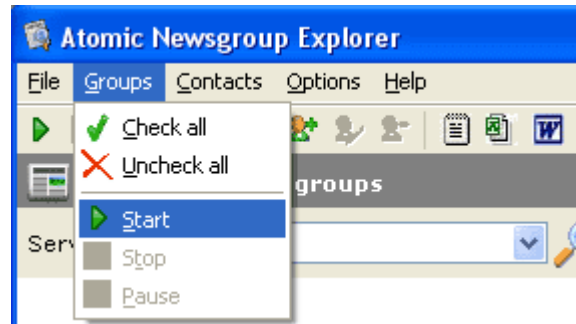
Terminates the process of loading user addresses to the main window field "Loaded user names and e-mails panel". Available only when the loading process is going on.

### ***Pause***

Temporarily pauses the process of loading user addresses to the

main window field "Loaded user names and e-mails panel". Available only when the loading process is going on. To resume the process, press Start.

## Contacts



### **Edit contact**

Launches data string editor for "Loaded user names and e-mails panel".

### **Add contact**

Adds a new user to "Loaded user names and e-mails panel" and launches the data string editor dialog window.

### **Delete contact**

Deletes all selected users from "Loaded user names and e-mails panel".

### **Custom delete**

#### **All containing name ...**

Deletes all users with a certain name from "Loaded user names and e-mails panel". The name is entered in the special dialog window:

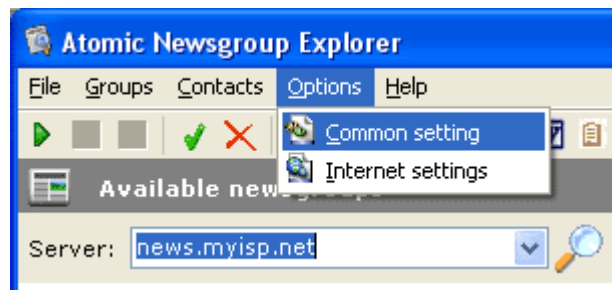
#### **All from this group...**

Deletes all users belonging to a certain news group from "Loaded user names and e-mails panel". The news group is entered in the special dialog window:

### **Mail to address**

Launches the default e-mail client and inserts the e-mail address selected in "Loaded user names and e-mails panel" into the Recipient field of the e-mail client.

## Options



### ***Common settings***

Launches the common setting dialog window:

*Thread count* - The number of threads that are involved simultaneously in downloading user information.

*Show splash window* - Allows splash window to be turned on/off

### ***Internet settings***

Launches the Internet connection parameters dialog window:

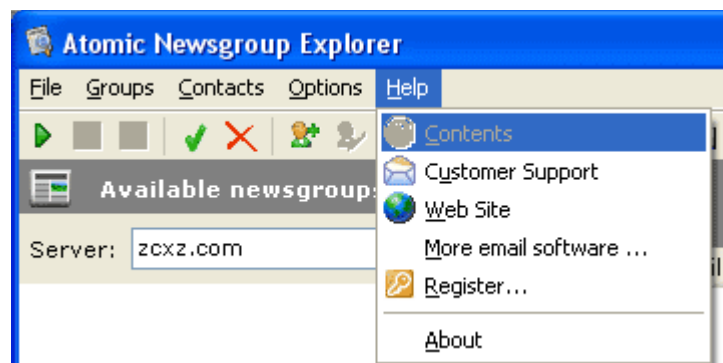
*NNTP port* - News server connection port

*Timeout* - Maximum amount of time allowed for the server reply.

*User name* - User name required to access password-protected news groups.

*User password* - Password required to access password-protected news groups.

## **Help**



***Contents***

***Customer support***

***Web site***

***More email software***

***About***

# Downloads

The latest version of **Atomic Newsgroup Explorer** can be downloaded freely from our web site. The permanent location of the distribution package is:

<http://www.massmailsoftware.com/d/ane.exe>.

**Also you can visit our site [massmailsoftware.com](http://www.massmailsoftware.com).**

## Contact us!

### E-mail:

Feel free to contact us by e-mail at [ane@massmailsoftware.com](mailto:ane@massmailsoftware.com). We are always happy to answer your questions so you can get the most out of our software.

### Phone:

We do not offer phone support. We respond promptly to all emails received and feel this allows us to give you the best service and most complete answers to your questions.

## Why should I register your software?

For many people, the biggest reason to register is to remove the program restrictions and get rid of the nag screen, which pops up at the most inconvenient times. For example, the unregistered version of **Atomic Newsgroup Explorer** does not allow you to save the extracted e-mail addresses.

Also, registration entitles you to receive technical support with higher priority and minor upgrades to the software for free. Registration may also entitle you to discounts on new software releases from **AtomPark Software**. We will also send you updates and announcements by email to let you know about what's happening with our products.

Finally, by registering the software, you provide us with the resources and incentive to improve the software with updates, which you receive for free, and to develop additional quality products in the future.

# Register Atomic Newsgroup Explorer

The current version of **Atomic Newsgroup Explorer** is distributed under a "free to try" license. That means you may download a trial version for evaluation. The trial version has some features locked. If you wish to purchase the program for unrestricted use, the cost is \$49.85 USD. You will be sent a code to register the software through email.

## ▶ What the registration does give me?

### Online purchase

To buy **Atomic Newsgroup Explorer** on-line please follow the link below:

▶ <http://www.massmailsoftware.com/buy/ane.htm>

### Telephone and Fax Orders

If using telephone or fax orders, please include product ID: 7077-17 to ensure that you are paying for the right product.

Telephone:

US only (toll free): 877-353-7297

Outside the US: 425-392-2294

Fax:

US only (toll free): 888-353-7276

Outside the US: 425-392-0223

### Check via Postal Mail

Please make sure you are making your check out to "Register Now!". You need to provide all of the information on the regular order form except credit card information. Please make sure you've included the product ID: 7077-14 to ensure that you are paying for the right product, and your postal and e-mail address for speedy service.

Please mail checks to:

*Register Now!*

*ATTN: Orders*

*PO Box 1816*

*Issaquah. WA 98027*

*United States of America*

### Purchase Orders

If using purchase orders, make sure you've included the product ID: 7077-17 to ensure that you are paying for the right product.

A purchase order must be faxed or mailed with all necessary information including billing information. Most companies who choose to use the purchase order option have a standard form they use for making these types of orders.

**Other Payment Methods are available.**

We also accept **Western Union** international money transfer and **PayPal** payments.

If you are software developer and have an account at **RegNow**, **RegSoft** or **Emetrix** you may ask about vendor-to-vendor transfers.

If you have a fresh idea how to register AHPP feel free to [contact us](#). We are always looking for way to improve our service and your experience with us.